



The
Greatest
LOOP
by BENETEAU

MAY THROUGH SEPTEMBER 2012

The TEST



While no one can say for sure just how many cruising enthusiasts have embarked on the magnificent journey around the Great Loop, it's safe to say the number ranks in the thousands with the epic adventure gaining in popularity as more baby boomers reach retirement.

One might question the lure of this pilgrimage which tests the strength, stamina and determination of both man and vessel. Ask one of the many members of America's Great Loop Cruisers' Association, an organization dedicated to enhancing the overall experience for those dreaming of the voyage, planning their Great Loop adventure or those who have conquered the cruise of a lifetime.

The Great Loop, also referred to as the Great Circle Route is the circumnavigation of Eastern North America. The entire journey typically ranges between 4,500 and 7,500 miles depending on the selected course through the Great Lakes, Canadian Heritage Canals, Intracoastal Waterways, inland rivers and Atlantic Ocean.

Beneteau's powerboats division launched its new Swift Trawler range in North America just over a year ago. It didn't take Beneteau long to understand cruisers' love affair with the Great Loop. Given the Swift Trawler 34 is a performance-based cruising boat offering impressive fuel efficiency at a time when cruisers need it most, the boat builder decided to test her true performance and comfort where the rudder meets the water - around The Great Loop.

The boat, appropriately named The Greatest Loop will embark on her maiden voyage in mid-May 2012 and end in Annapolis, Maryland in September 2012. She'll be outfitted with the latest equipment available in the marine industry including her engine, a Cummins QSB5.9 312KW (425HP) Diesel. Marine publications throughout North America and Europe will be aboard The Greatest Loop for specific segments of the journey to document and share with their readers experiences both on water and land along the way. Audiences interested in following her journey can participate in the expedition with Beneteau and their many partners at www.TheGreatestLoop.com. For more information about Swift Trawler by Beneteau, visit www.SwiftTrawler.net.

The Greatest Loop Contact Information

Public Relations: Maryline O'Shea – Beneteau Powerboats / 443-924-0856 / power@beneteau.com

Route Logistics: Axel Traineau – Beneteau Powerboats / 443-254-2103 / atraineau@beneteau.fr

Technical: Patrick Hopkins – Annapolis Yacht Sales / 410-267-8181 / patrick@annapolisyachtsales.com





The
Greatest
LOOP
by BENETEAU

MAY

- Annapolis, MD 1
- Rock Hall, MD 2
- Atlantic City, NJ 3
- New York, NY 4
- Albany, NY 5
- Oswego, NY 6
- Toronto, ON 7
- Trenton, ON 8

JUNE

- Port Severn, ON 9
- Georgian Bay, ON 10
- Mackinaw City, MI 11
- Harbor Springs, MI 12
- Milwaukee, WI 13
- Chicago, IL 14
- Peoria, IL 15
- St. Louis, MO 16
- Cape Girardeau, MO 17
- Paducah, KY 18
- Itawamba, MS 19
- Demopolis, AL 20

JULY

- Mobile, AL 21
- Pensacola, FL 22
- Panama City, FL 23
- St. Petersburg, FL 24
- Fort Meyers, FL 25
- Key West, FL 26
- Marathon, FL 27
- Miami, FL 28
- Fort Lauderdale, FL 29

AUGUST

- Palm Beach, FL 30
- Stuart, FL 31
- Coco Beach, FL 32
- Jacksonville, FL 33
- St. Simons Island, GA 34
- Hilton Head, SC 35
- Charleston, SC 36
- Myrtle Beach, SC 37
- Wilmington, NC 38
- Beaufort, NC 39

SEPTEMBER

- Coinjock, NC 40
- Deltaville, VA 41
- Annapolis, MD 1

Planned EVENTS*



AGLCA Rendezvous	Norfolk, VA	May 7-10
Annapolis Yacht Sales & Proptalk Open House	Annapolis, MD	May 12
Departure Ceremony at Annapolis City Dock	Annapolis, MD	May 15
Cape Yachts & Soundings Magazine Event	New York, NY	May 17-19
Anchor Yacht Sales & Lakeland Boating Event	Toronto, ON	May 26-28
Cummins, PMY & Beneteau Event	Chicago, IL	June 15-17
PassageMaker Event & July 4th Celebration	Mobile, AL	July 4
PassageMaker Event	Key West, FL	July 21
Denison Yacht Sales and Southern Boating Event	Ft.Lauderdale, FL	August 4
St. Barts Open House	Jacksonville, FL Charleston, SC	August 11 August 15
Cummins Factory Tour	Charleston, SC	August 16
Annapolis Yacht Sales Open House & Event	Annapolis, MD	September 7
Baltimore Trawler Fest	Baltimore, MD	September 25-30
Annapolis Powerboat Show	Annapolis, MD	October 11-14

* Subject to change due to unexpected delays and weather conditions.

The Greatest Loop Contact Information

Public Relations: Maryline O'Shea – Beneteau Powerboats / 443-924-0856 / power@beneteau.com

Route Logistics: Axel Traineau – Beneteau Powerboats / 443-254-2103 / atraineau@beneteau.fr

Technical: Patrick Hopkins – Annapolis Yacht Sales / 410-267-8181 / patrick@annapolisyachtsales.com



BOAT

Specifications



34



Length overall	36'7"	11.14 M
Hull length	32'9"	9.98 M
Beam	13'1"	4.00 M
Light displacement	16,356 Lbs	7.471 KG
Draft	3'7"	1.10 M
Air draft	11'11"	3.62 M
Maximum engine power	425 HP	425 CV
Fuel capacity	211 US Gal	800 L
Water capacity	85 US Gal	320 L
CE Certification	B8/C10/D11	

Hull number:	202 (Built in Challans, France)
Engine:	Cummins QSB5.9 312 KW (425 HP) Diesel, 2 wheelhouses
Layout:	Two cabins, one head & convertible salon
Upholstery & Finish:	Ultra-leather Promessa upholstery in salon, Alpi Mahogany wood finish

The Greatest Loop Contact Information

Public Relations: Maryline O'Shea – Beneteau Powerboats / 443-924-0856 / power@beneteau.com

Route Logistics: Axel Traineau – Beneteau Powerboats / 443-254-2103 / atraineau@beneteau.fr

Technical: Patrick Hopkins – Annapolis Yacht Sales / 410-267-8181 / patrick@annapolisyachtsales.com



BOAT Equipment



Standard:	1000 W electric windlass Deck searchlight White lacquered aluminum loading boom Pump for deck washing Shore freshwater intake PVC woven beige forward sun mattress DVD/MP3 player in salon TV and antenna pre-wiring for every station
Electronic Pack:	Raymarine 240E VHF DSC position simply coupled to Raymarine AIS receiver 650 (Transmitter-Receiver)
Raymarine Upgrades:	e125 12.1" multi function display with wireless/smartphone interface p70 autopilot & repeater flybridge e95 9" multi function display on flybridge HD color 4kW 48NM radar T450 thermal night vision camera with low light video TH32 handheld thermal night vision camera
On This Hull:	Cummins Onan generator 7.5 KVA 110V/60HZ with sound shield Cruisair 110V air conditioning by Dometic Electric toilet Mooring/anchoring kit L-shaped cockpit bench with PVC woven beige cushions White console cover White sun worker outside wheelhouse curtains Double station stern thruster Rigid grey water tank 85 gal Carpet in wheelhouse (Corail) Carpet in cabins and gangway (Corail) Dividing curtain between galley and salon Mosquito nets for lateral and aft doors Solid wood slatted cockpit floor and starboard side deck

The Greatest Loop Contact Information

Public Relations: Maryline O'Shea – Beneteau Powerboats / 443-924-0856 / power@beneteau.com

Route Logistics: Axel Traineau – Beneteau Powerboats / 443-254-2103 / atraineau@beneteau.fr

Technical: Patrick Hopkins – Annapolis Yacht Sales / 410-267-8181 / patrick@annapolisyachtsales.com



FUEL

Efficiency



Swift 34 Performance

Calculated with a 20% reserve

Speed (kts)	Fuel Burn (gal/hr)	Fuel Burn (gal/10nm)	Range (nm)
6.1	1.27	2.1	813
7.2	1.72	2.4	709
7.9	2.64	3.3	506
8.6	3.83	4.5	380
9.3	5.15	5.5	305
10.6	7.82	7.4	229
11.7	9.41	8.0	210
14	11.65	8.3	203
16	13.84	8.7	195
17.8	16.57	9.3	182
20.5	20.03	9.8	173
21	20.58	9.8	173

The Greatest Loop Contact Information

Public Relations: Maryline O'Shea – Beneteau Powerboats / 443-924-0856 / power@beneteau.com

Route Logistics: Axel Traineau – Beneteau Powerboats / 443-254-2103 / atraineau@beneteau.fr

Technical: Patrick Hopkins – Annapolis Yacht Sales / 410-267-8181 / patrick@annapolisyachtsales.com



Our PARTNERS



Cummins Inc., a global power leader, is a corporation of complementary business units that design, manufacture, distribute and service engines and related technologies, including fuel systems, controls, air handling, filtration, emission solutions and electrical power generation systems. Headquartered in Columbus, Indiana (USA), Cummins employs approximately 40,000 people worldwide and serves customers in approximately 190 countries and territories through a network of more than 600 company-owned and independent distributor locations and approximately 6,000 dealer locations. Cummins earned \$1.0 billion on sales of \$13.2 billion in 2010.

The marine business, headquartered in Charleston, South Carolina, is responsible for designing, manufacturing and distributing marine propulsion engines below 15 liters and marine auxiliary engines from 37 kW.



The Cummins Onan brand is leading the way by offering the most innovative marine generator sets available, making boating simpler. Cummins Onan digital series generator sets provide smart power with user-friendly diagnostic information. The self-monitoring system and flexible network communications bring you a new level of information for worry-free boating. Cummins Onan is backed by the largest global support network and provides performance you rely on.



Raymarine, a world leader in marine electronics, develops and manufactures the most comprehensive range of electronic equipment for the recreational boating and light commercial marine markets. Designed for high performance and ease of use, the award-winning products are available through a global network of dealers and distributors. The Raymarine product lines include radar, autopilots, thermal night vision, GPS, instruments, fishfinders, communications, and integrated systems. Raymarine is a division of FLIR Systems, a world leader in thermal imaging.



Established in 1954, Annapolis Yacht Sales is a family-owned and operated brokerage with an in-house service department. Annapolis Yacht Sales has been named Dealer of the Year by Beneteau five consecutive years.

The Greatest Loop Contact Information

Public Relations: Maryline O'Shea – Beneteau Powerboats / 443-924-0856 / power@beneteau.com

Route Logistics: Axel Traineau – Beneteau Powerboats / 443-254-2103 / atraineau@beneteau.fr

Technical: Patrick Hopkins – Annapolis Yacht Sales / 410-267-8181 / patrick@annapolisyachtsales.com



Our PARTNERS



Dometic Marine provides boaters with dedicated marine air conditioning and sanitation systems. The revolutionary Stowaway Turbo HVAC system by Cruisair provides quiet, efficient, worry-free climate control as part of its diverse range of air conditioning systems for all types of pleasure craft from weekend cruisers to superyachts. Our continuous product innovation and unequalled quality ensure that Dometic Marine products surpass the expectations of the most discerning boat owner. And with the largest global marine sales and service network, Dometic Marine customers find support wherever they travel.



MarinaLife is the cruisers' concierge providing the boating community with the most extensive online directory of marina information along with access to its unique marina reservation system, trip planning, weather, maps/charts, mileage, marina reviews and more. The team at MarinaLife is committed to helping make cruisers' boating experience hassle free.



The AGLCA was formed in 1999 by Ron and Eva Stob after they discovered cruising and became enchanted with the Great Loop. Since its inception, the organization's focus has been two-fold. To share general, navigational and cruising information about eastern North America's waterways; and to enhance the overall experience of learning about, dreaming of, exploring and safely cruising America's Great Loop.

In 2007, with the full confidence of Ron and Eva Stob, the Kromer family purchased the association. Under the Kromer's leadership, the association has grown to over 2,400 members. To learn more about the organization along with its programs, events and tools available to members, visit www.GreatLoop.org.



SGB Finance North America, Inc., a subsidiary of SGB Finance S.A France, is a joint venture between CGL and the Beneteau Group. This partnership allows SGB Finance North America to offer marine financing solutions through approximately 250 distributors making it one of the leaders in financing both sail and power yachts. To learn more about SGB Finance, visit www.sgb-finance.us.

The Greatest Loop Contact Information

Public Relations: Maryline O'Shea – Beneteau Powerboats / 443-924-0856 / power@beneteau.com

Route Logistics: Axel Traineau – Beneteau Powerboats / 443-254-2103 / atraineau@beneteau.fr

Technical: Patrick Hopkins – Annapolis Yacht Sales / 410-267-8181 / patrick@annapolisyachtsales.com



Our PARTNERS



ValvTect Petroleum is the nation's leading supplier of marine fuels and fuel additives. Their specially formulated marine fuels have been proven to improve fuel quality, thus yielding improved engine efficiency and performance, reduced fuel consumption and extended engine life. ValvTect will provide The Greatest Loop with privileged access to ValvTect Marine Diesel through their extensive network of Certified ValvTect Marinas along The Great Loop.



Interlux is a worldwide leader of technically advanced antifouling coatings, epoxy primers, finishes, varnishes and interior paint solutions for both consumer and trade. They are the only yacht paint company to have a formal, scientifically documented and proven environmental assessment of their products from cradle to grave. Through her travels, The Greatest Loop will put Interlux' Pacifica Plus antifouling paint to the test. Pacifica Plus provides an alternative to boat owners, boatyards and those in the boating community looking for a copper-free antifouling paint.



DeLorme is a leader in innovative personal tracking, messaging and SOS alerting products with global coverage. The Greatest Loop will be equipped with DeLorme's inReach™ 2-Way Satellite Communicator which earlier this year received the coveted National Marine Manufacturers Association (NMMA) Innovation Award for Consumer Electronics. inReach provides automatic follow-me tracking, two-way text messaging with smartphone connectivity and SOS distress alerts with message delivery confirmation.



BoatUS is joining Beneteau with two initiatives. Its on-the-water towing service, TowBoatUS, will provide The Greatest Loop with access to the largest network of on-the-water commercial towing companies nationwide – with over 600 boats in over 300 ports. In addition, the BoatUS Foundation for Boating Safety and Clean Water is loaning The Greatest Loop crew an Emergency Position Indicating Radio Beacon (EPIRB), which will ensure its safety while travelling offshore. The Foundation's EPIRB rental program offers recreational boaters the largest inventory of rental EPIRBs in the country.

The Greatest Loop Contact Information

Public Relations: Maryline O'Shea – Beneteau Powerboats / 443-924-0856 / power@beneteau.com

Route Logistics: Axel Traineau – Beneteau Powerboats / 443-254-2103 / atraineau@beneteau.fr

Technical: Patrick Hopkins – Annapolis Yacht Sales / 410-267-8181 / patrick@annapolisyachtsales.com



Our PARTNERS



Waterway Guide is the time tested, best known and most respected cruising resource available. Since 1947, boaters have trusted Waterway Guide before making their cruising and buying decisions. Waterway Guide is the boater's choice for information on thousands of marinas and hundreds of businesses and attractions along the way. All six editions (Bahamas, Southern, Atlantic ICW, Chesapeake Bay, Northern and Great Lakes) of Waterway Guide and 14 Skipper Bob guides are updated annually by on-the-water cruising editors, each possessing an average of 35 years active boating experience and by their expert production staff in Deltaville, Virginia.



Trawler Fest is a unique boat show experience that strives to bring recreational boaters one step closer to achieving their dreams. Whether an expert or novice boater, with dreams of exploring the hidden depths of the ocean or cruising the Intracoastal Waterways, Trawler Fest offers the tools: education, boats, products, networking, and rendezvous.



Zodiac Recreational of North America, LLC – a subsidiary of Zodiac ZMP, the world's largest manufacturer of RIBs, inflatable boats and the world's oldest and most recognized manufacturer of inflatable boats – is an NMMA certified marine manufacturer of RIBs and inflatable boats with an extensive production, distribution and customer service operation throughout the America's for recreational boating purposes. Zodiac is the provider of the Greatest Loop's tender, a Cadet Compact 250.



Navigators can rely on Navionics charts to provide the best detail worldwide, with an abundance of data derived from the most reliable sources available and presented in a clear, easy to use interface. With Navionics' Platinum+ series, the multi-dimensional marine charts take the navigational experience to a whole new level with 3D view, integrated aerial imagery layer, and port photos. Boaters can enjoy perspective well beyond that available from traditional charts, while viewing harbours, marina entrances, and surrounding topography.

The Greatest Loop Contact Information

Public Relations: Maryline O'Shea – Beneteau Powerboats / 443-924-0856 / power@beneteau.com

Route Logistics: Axel Traineau – Beneteau Powerboats / 443-254-2103 / atraineau@beneteau.fr

Technical: Patrick Hopkins – Annapolis Yacht Sales / 410-267-8181 / patrick@annapolisyachtsales.com



Our PARTNERS



Weems & Plath, manufacturer of fine nautical instruments since 1928, is headquartered in Annapolis, Maryland and is well known for the manufacturing of quality navigation tools and fine nautical instruments throughout the world.



T2H is proud to be the agency of record for Beneteau. From identity and brand development, to print and broadcast advertising – from website design and programming to marketing communications planning, media buying and special promotions; we do it all. And unlike many other “boutique” agencies, we do it all in-house. We’re a team of professionals Beneteau can count on to be in the trenches with them everyday. People who can think, solve, plan, create and execute beyond the boundaries of “good enough,” always in pursuit of “Insanely Great” work that gets results.

The Greatest Loop Contact Information

Public Relations: Maryline O'Shea – Beneteau Powerboats / 443-924-0856 / power@beneteau.com

Route Logistics: Axel Traineau – Beneteau Powerboats / 443-254-2103 / atraineau@beneteau.fr

Technical: Patrick Hopkins – Annapolis Yacht Sales / 410-267-8181 / patrick@annapolisyachtsales.com



Participating DEALERS



Established in 1954, Annapolis Yacht Sales is the leading new yacht and brokerage dealer in the Mid-Atlantic region with locations in Annapolis and Rock Hall, MD, as well as Deltaville, VA. Annapolis Yacht Sales handles every part of the buying/selling process including financing, surveying, coordinating documentation and securing insurance. AYS has a long standing reputation for expert knowledge and a friendly way of doing business. Its renowned service division specializes in all types of commissioning, repair and maintenance. Annapolis Yacht Sales has been named Dealer of the Year by Beneteau five consecutive years.

7350 Edgewood Road / Annapolis, MD 21403 / 410-267-8181 / www.annapolisyachtsales.com
274 Buck's View Lane / Deltaville, VA 23043 / 804-776-7575
21267 Rock Hall Ave / Rock Hall, MD 21661 / 410-639-4082



When Cape Yachts was founded over 25 years ago, they made a decision to build a company that would measure success one customer at a time. They held fast to that simple philosophy from the very first day in business. Since then, Cape Yachts has become one of the most referred to yacht dealers/brokers in the industry. The Cape Yachts team of brokers are unique in their drive, extensive construction knowledge, focus on customer service and in-depth understanding of the market. Cape Yachts is a Nationally Certified Professional Yacht Broker and New England's only Beneteau Platinum Dealer with a 5-Star Certified Marine Dealership.

218 Elm Street / South Dartmouth, MA 02748 / 508-994-4444 / www.cape-yachts.com
33 Pratt Street / Essex, CT 06426 / 860-767-8224
622 Rushmore Avenue / Mamaroneck, NY 10543 / 914-698-2501



Anchor Yacht Sales is a professional full-service dealership located in Port Credit, Ontario. They are the authorized dealer for both Beneteau power and sail brands. Their full-time, experienced professional yacht brokers have long assisted customers with buying and selling new and used power and sailing yachts.

1 Port Street / East Port Credit, ON L5G 4N1 / 905-891-0191 / www.anchoryachtsales.com

The Greatest Loop Contact Information

Public Relations: Maryline O'Shea – Beneteau Powerboats / 443-924-0856 / power@beneteau.com

Route Logistics: Axel Traineau – Beneteau Powerboats / 443-254-2103 / atraineau@beneteau.fr

Technical: Patrick Hopkins – Annapolis Yacht Sales / 410-267-8181 / patrick@annapolisyachtsales.com



Participating DEALERS



Murray Yacht Sales is a full-service yacht brokerage firm serving the Gulf Coast yachting community for over thirty years. It all started in September 1974, when Tim Murray purchased Walet Yacht Sales in New Orleans, LA. Now, Tim's son Stanton runs the business with the same focus and commitment to customer service which made Murray Yacht Sales such a success.

6510 Spanish Fort Boulevard, New Orleans, LA 70124 / 504-283-2507 / www.murrayyachtsales.com
1421 Bay St SE St Petersburg, FL 33701 / 727-214-1590



The Denison family has a rich heritage and impeccable reputation in the marine industry. The tradition continues with Denison Yacht Sales, a full-service yacht brokerage and yacht charter firm with marina offices in Fort Lauderdale, Florida and Marina del Rey, California. Denison's team of 35 licensed and bonded yacht brokers proudly represent Beneteau. Denison has helped international boat buyers purchase motor yachts, trawlers, sailboats, and super yachts in the U.S. from over 20 countries, including, Russia, Australia, Sweden, England, Scotland, Ireland, Italy, France, Iceland, Germany, Spain, Mexico, Argentina, Brazil, and throughout the Caribbean.

401 S.W. 1st Avenue #102 / Fort Lauderdale, FL 33301 / 954-763-3971 / www.denisonyachtsales.com
13555 Fiji Way / Marina del Rey, CA 90292 / 310-821-5883



St. Barts Yachts was founded in 1987 by Chuck Laughlin and is one of the leading Beneteau dealers in the Southeast. Headquartered in Charleston, SC, St. Barts Yachts also has locations in Jacksonville, Florida and Oriental, North Carolina. St. Barts Yachts is among a select group of 17 dealers in North America designated as a Beneteau Certified Platinum Dealer. In addition to providing its clients exceptional brokerage services, St. Barts Yachts boasts a service department highly skilled in boat commissioning and maintenance. In fact, its service department has earned the Beneteau USA President's Top Service award for seven consecutive years.

3 Lockwood Drive, Suite 301 / Charleston, SC 29401 / 843-577-7377 / www.st-barts.com
Oriental Harbor Village & Marina / 518 Water St, Ste B / Oriental, NC 28571 / 252-249-SAIL(7245)
3027 US Hwy 17 / Orange Park, FL 32003 / 904/264-9100

The Greatest Loop Contact Information

Public Relations: Maryline O'Shea – Beneteau Powerboats / 443-924-0856 / power@beneteau.com

Route Logistics: Axel Traineau – Beneteau Powerboats / 443-254-2103 / atraineau@beneteau.fr

Technical: Patrick Hopkins – Annapolis Yacht Sales / 410-267-8181 / patrick@annapolisyachtsales.com



In the LOOP



While Beneteau is widely known throughout North America as the #1 builder of 30-foot plus sailing yachts, some may not know Beneteau has long been building some of the most sought after powerboat brands. "Our powerboats are among the most highly regarded and reputable ones in the industry abroad," explains Laurent Fabre of Beneteau. "We've been given an exciting challenge to raise awareness throughout North America of the Swift Trawler and Flyer Gran Turismo ranges by Beneteau, and we have certainly made significant progress in spite of the unfavorable market conditions," he adds.

The Beneteau Powerboats Division launched its sales and marketing office in Annapolis, Maryland just over a year ago. Laurent Fabre is leading the North American expansion for Beneteau's Powerboats Division as vice president of sales and marketing. He is joined by Emmanuel Arri as vice president of finance and administration along with Maryline O'Shea as director of marketing.

Beneteau is known worldwide for its sleek design, quality construction and innovation in the manufacturing of seaworthy sailing and power yachts. The Beneteau story began more than 125 years ago when Benjamin Bénéteau started building fishing trawlers in Saint-Gille-Croix-de-Vie, France. Today, the company continues to thrive under the leadership of Benjamin Bénéteau's granddaughter, Madame Annette Bénéteau-Roux. Beneteau has grown to twenty manufacturing facilities in France, Italy and the United States. Another production facility for powerboats is under construction in Brazil.



Beneteau's roots stretch back over 125 years when Benjamin Bénéteau began building fishing trawlers tough enough to handle the worst of the North Atlantic.



When Benjamin's granddaughter, Madame Annette Bénéteau-Roux took the helm, she helped transform the company into the world's premier producer of recreational sailing and motor yachts.

The Greatest Loop Contact Information

Public Relations: Maryline O'Shea – Beneteau Powerboats / 443-924-0856 / power@beneteau.com

Route Logistics: Axel Traineau – Beneteau Powerboats / 443-254-2103 / atraineau@beneteau.fr

Technical: Patrick Hopkins – Annapolis Yacht Sales / 410-267-8181 / patrick@annapolisyachtsales.com



MEDIA Support



BoatU.S.

Readers view BoatU.S. Magazine as their primary source of boating information.

Circulation: 510,000

Household income: \$161,900

Soundings

89% of Soundings readers own boats between 21' and 50' and 34% plan to purchase a boat in the next 12 months.

Circulation: 538,000

Household income: \$220,700

Lakeland Boating

Lakeland Boating reaches affluent boaters in the Great Lakes region.

Circulation: 40,000 +

Household income: \$171,000

Power & MotorYacht

PMY delivers its marketing messages to a highly qualified pool of affluent buyers.

Circulation: 148,685 +

Household income: \$340,000

PassageMaker

PassageMaker readers are avid enthusiasts and receptive to new cruising ideas and opportunities.

Circulation: 41,000 +

Average net worth: \$2,000,000

Southern Boating

Boating enthusiasts from the South turn to Southern Boating for information, inspiration, and qualified opinions.

Circulation: 40,000

53% own more than one boat

82% own a vessel 30' or more

BoatTEST.com

BoatTEST.com is the definitive online source for unbiased boat reviews for those in the market for a new boat.

Moteur Boat/Neptune

France's Largest circulation motor boating magazine provides tests of powerboats and practical advice.

Circulation: 35,000

Motor Boats Monthly

The UK's best selling motorboat magazine providing the latest boat tests and the best practical advice.

Circulation: 12,000

The Greatest Loop Contact Information

Public Relations: Maryline O'Shea – Beneteau Powerboats / 443-924-0856 / power@beneteau.com

Route Logistics: Axel Traineau – Beneteau Powerboats / 443-254-2103 / atraineau@beneteau.fr

Technical: Patrick Hopkins – Annapolis Yacht Sales / 410-267-8181 / patrick@annapolisyachtsales.com



ONLINE Resources



The Greatest Loop Blog, Logbook, Photos and More

<http://www.thegreatestloop.com/>

The Greatest Loop Official Facebook Page

<http://www.facebook.com/TheGreatestLoopByBeneteau/>

Swift Trawler Website

<http://www.swifttrawler.net/>

BoatTest.com Part I Sea Trial

http://www.boattest.com/Partners/Partner-Main.aspx?lp_id=3211533&t=BOAT-TEST&Videoid=2508&p=0&s=

BoatTest.com Part II Features

http://www.boattest.com/Partners/Partner-Main.aspx?lp_id=3211533&t=VLIBRARY&Videoid=2290&p=4&s=

BoatTest.com Part III Engine Room

http://www.boattest.com/Partners/Partner-Main.aspx?lp_id=3211533&t=VLIBRARY&Videoid=2289&p=4&s=

BoatTest.com Part IV Close Quarters Maneuvering

http://www.boattest.com/Partners/Partner-Main.aspx?lp_id=3211533&t=VLIBRARY&Videoid=2302&p=4&s=

BoatTest.com Full Captain's Report

http://www.boattest.com/Partners/Partner-Main.aspx?lp_id=3211533&t=BOAT-TEST&Videoid=2508&p=3&s=

SGB Finance

www.sgb-finance.us/

Cummins

<http://www.cmdmarine.com/>

Cummins Onan

<http://www.cumminsonan.com/>

Raymarine

<http://www.raymarine.com/>

Dometic Marine

<http://www.dometicus.com/>

Marinalife

<http://www.marinalife.com/>

America's Great Loop Cruisers' Association

<http://www.greatloop.org/>

Annapolis Yacht Sales

<http://www.annapolisyachtsales.com/>

ValvTect

<http://www.valvtect.com/>

DeLorme

<http://www.delorme.com/>

Interlux

<http://www.interlux.com/>

Waterway Guide

<http://www.waterwayguide.com/>

Trawler Fest

<http://www.passagemaker.com/>

Navionics

<http://www.navionics.com/>

Zodiac

<http://www.zodiacmarineusa.com/>

Weems & Plath

www.weems-plath.com/

BoatUS

<http://www.boatus.com/>

T2H Advertising

<http://t2hadvertising.com/>

Anchor Yacht Sales

<http://www.anchoryachtsales.com/>

Cape Yachts

<http://www.cape-yachts.com/>

Denison Yacht Sales

<http://www.denisonyachtsales.com/>

Murray Yacht Sales

<http://www.murryyachtsales.com/>

St. Barts Yachts

<http://www.st-barts.com/>

The Greatest Loop Contact Information

Public Relations: Maryline O'Shea – Beneteau Powerboats / 443-924-0856 / power@beneteau.com

Route Logistics: Axel Traineau – Beneteau Powerboats / 443-254-2103 / atraineau@beneteau.fr

Technical: Patrick Hopkins – Annapolis Yacht Sales / 410-267-8181 / patrick@annapolisyachtsales.com



Appendix



Cummins

Raymarine

Cummins Onan

Cruisair by Dometic

ValvTect

InterLux

DeLorme

Dozier's Waterway Guide

Trawler Fest

Zodiac

Navionics

The Greatest Loop Contact Information

Public Relations: *Maryline O'Shea* – Beneteau Powerboats / 443-924-0856 / power@beneteau.com

Route Logistics: *Axel Traineau* – Beneteau Powerboats / 443-254-2103 / atraineau@beneteau.fr

Technical: *Patrick Hopkins* – Annapolis Yacht Sales / 410-267-8181 / patrick@annapolisyachtsales.com





QSB5.9

QUANTUM SERIES ENGINE

Features

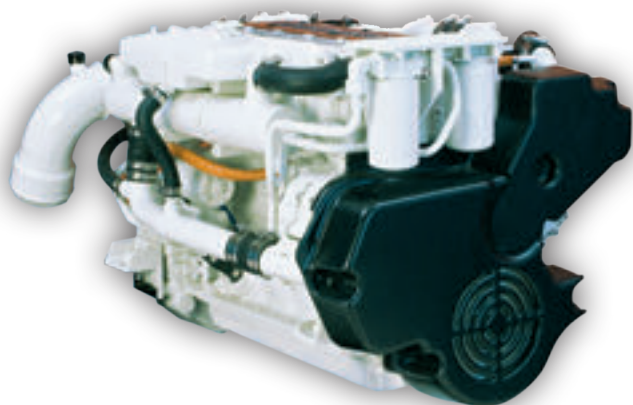
- Fuel System:** Bosch High-Pressure Common-Rail, Front mounted spin-on Fleetguard fuel filter
- Lubrication System:** Front mounted spin-on Fleetguard lube filter
- Electrical System:** 12-volt and 24-volt systems available
- Air Intake System:** Light duty or servicable type air cleaner
- Coolant System:** Sea Water heat exchanger cooling system; Keel cooled system available
- Emissions:** EPA Tier 2, IMO, and RCD certified
- Breather System:** Open or closed
- Engine Updates:** Optional dry run SW pump and an alternate fuel capability (JP8, JP5)

Engine Overview

- Unmatched performance driven through a perfectly matched turbocharger and a new 24-valve cylinder head that delivers industry-leading power density
- Quiet operation, including an 80-percent reduction in noise at idle, is one of the many benefits from the common-rail fuel system
- Enhanced sociability from the high-pressure common-rail design virtually eliminates smoke and improves the whole boating experience
- Maximize vessel performance and access comprehensive vessel diagnostic information via SmartCraft® electronics
- Peace of mind delivered by the Cummins Captain's Briefing and global service network

Engine Specifications

Configuration	In-line 6-cylinder, 4-stroke diesel
Bore & Stroke	102 mm x 120 mm (4.02 in x 4.72 in)
Displacement	5.9 L (359 in ³)
Aspiration	Turbocharged / Aftercooled
Rotation	Counterclockwise facing flywheel



Power Ratings

Rating	HO/GS	HO	ID/HO	HO/GS	ID/HO	HO	MD/HO	HD/HO	ID/HO
Metric hp	480	440	425	380	355	330	305	230	230
bhp	472	436	420	375	350	325	300	225	227
KW	352	325	313	280	261	243	224	168	169
Rated rpm	3400	3400	3000	3000	2800	2800	2600	2600	3000
Max Torque ft-lbs	942	913	908	898	853	830	783	670	510
Max Torque N-m	1278	1238	1231	1218	1156	1125	1062	908	691
rpm @ max torque	2200	2000	2000	2000	2000	1800	1800	1600	1600

Ratings and specifications subject to change without notice. Not responsible for typographical errors.

QSB5.9 QUANTUM SERIES ENGINE

Fuel Consumption (Prop Curve)

Rating	QSB5.9 - 480 HO/GS				QSB5.9 - 440 HO				QSB5.9 - 425 ID/HO				QSB5.9 - 380 HO/GS				QSB5.9 - 355 ID/HO			
rpm	3400	3200	3000	2800	3400	3200	3000	2800	3000	2800	2600	2400	3000	2800	2600	2400	2800	2600	2400	2200
KW	352	348	340	334	325	319	318	310	313	307	299	292	280	279	281	271	261	259	256	254
l/hr	97.4	79.1	62.8	52	90.6	72.8	58.7	48.6	81.3	65.5	53	43.4	76.2	60.6	48.1	39.5	68.1	55.2	44.3	36.2
bhp	472	466	456	448	436	427	426	416	420	411	401	391	375	374	377	364	350	347	343	340
gal/hr	25.7	20.9	16.6	13.7	23.9	19.2	15.5	12.8	21.5	17.3	14	11.5	20.1	16	12.7	10.4	18	14.6	11.7	9.6

Rating	QSB5.9 - 330 HO				QSB5.9 - 305 MD/HO				QSB5.9 - 230 HD/HO				QSB5.9 - 230 ID/HO			
rpm	2800	2600	2400	2200	2600	2400	2200	2000	2600	2400	2200	2000	3000	2800	2600	2400
KW	243	238	240	238	224	221	222	213	168	162	167	165	169	168	162	217
l/hr	63.3	50.8	41.6	33.5	57.3	47	37.9	30.8	42.2	36.8	29.7	23.3	47	40	33	26.8
bhp	325	319	321	320	300	296	287	286	225	217	225	222	227	226	217	207
gal/hr	16.7	13.4	11	8.9	15.1	12.4	10	8.1	11.1	9.7	7.9	6.1	12.5	10.6	8.7	7.1

Fuel consumption data represents performance along a 2.7 fixed pitch propeller curve (for HO, ID, MCD, 3.0 for HD and CON ratings). Fuel consumption is based on fuel of 35° API gravity at 16°C (60°F) having an LHV of 42, 780 KJ/KG (18,390 BTU/lb) when used at 29°C (85°F) and weighing 838.9 g/liter (7.001 lb/US gal). Observed horsepower is certified within ±5% of rated horsepower. Consult your local Cummins professional for further information.

Engine Dimensions

Length		Width		Height		Weight (Dry)*	
mm	in	mm	in	mm	in	kg	lb
1036	40.8	836	32.9	880	34.6	612	1350

*Does not include exhaust connection. Weights vary by rating. Length to flywheel housing. Length measured from back of flywheel to engine front. Overall height includes dipstick.

Available Accessories

Engine Controls: Digital Throttle and Shift; Electronic Throttle and Shift (ETS) and optional potentiometer for mechanical controls

Instrumentation: SmartCraft® 2.2 digital displays and/or analog gauges provide data on engine speed, oil pressure, engine load and more

Vessel System Integration: SmartCraft® 2.2 monitors fluid level, vessel range, depth, vessel speed, rudder position, temperatures and more



Ratings Definitions

Heavy Duty (HD): Intended for nearly continuous use in variable load applications, where full power is limited to eight hours out of every ten hours of operation. Also, reduced power operation must be at or below cruise rpm, which is 200 rpm below the maximum rated speed. This rating is for applications operating less than 5000 hours per year.

Medium Continuous (MD): Intended for moderate use in variable load applications, where full power is limited to six hours out of every twelve hours of operation. Also, reduced power operation must be at or below cruise rpm, which is 200 rpm below the maximum rated speed. This rating is for applications operating less than 3000 hours per year.

Intermittent (ID): Intended for intermittent use in variable load applications, where full power is limited to two hours out of every eight hours of operation. Also, reduced power operation must be at or below cruise rpm, which is 200 rpm below the maximum rated speed. This rating is for applications operating less than 1500 hours per year.

Government Service (GS): Intended for infrequent use in variable load applications, where full power is limited to one hour out of every eight hours of operation. Also, reduced power operation must be at or below cruise speed (rpm). Cruise speed (rpm) is dependent on the engine rated speed (rpm). Refer to Table 1 below. For applications operating less than 500 hours per year. Engines with this rating are restricted to non-revenue generating government service propulsion applications. It is not to be used in any revenue generating commercial applications, nor is it to be used in recreational/pleasure applications

High Output (HO): Intended for infrequent use in variable load applications, where full power is limited to one hour out of every eight hours of operation. Also, reduced power operation must be at or below cruise speed (rpm). Cruise speed (rpm) is dependent on the engine rated speed (rpm). Refer to Table 1 below. For applications operating less than 500 hours per year. Engines with this rating are intended for powering recreational/pleasure use vessels only. Commercial use is defined as any work or employment related use of the product, or any use of the product which generates income, for any part of the warranty period, even if the product is only occasionally used for such purposes.

Rating Conditions: Declared power ratings are based upon ISO 15550 reference conditions/ air pressure of 100kPa (29.612 in Hg) air temperature of 25° C (77°F) and 30% relative humidity. Propeller Shaft Power represents the net power available after typical reverse/reduction gear losses and is 97% of rated power. Power rated in accordance with IMCI procedures.

Table 1

Rated Speed	Cruise Speed (reduction from rated)
2000 to 2800 rpm	200 rpm
2801 to 3500 rpm	300 rpm
3501 to 4500 rpm	400 rpm

Ratings and specifications subject to change without notice. Not responsible for typographical errors.



Cummins Inc.
4500 Leeds Avenue - Suite 301
Charleston, SC 29405-8539
U.S.A.

©2012 Cummins Inc.

NEWS RELEASE

Contact: Jim Hands, Raymarine
Director of Marketing
603.324.7970
jim.hands@raymarine.com

Haley Ellison, FLIR Systems, Inc.
PR and Ad Manager
503.919.0696
haley.ellison@flir.com

RAYMARINE NAVIGATES THE GREATEST LOOP WITH BENETEAU

Swift Trawler 34 equipped with Raymarine electronics for the Greatest Loop epic adventure

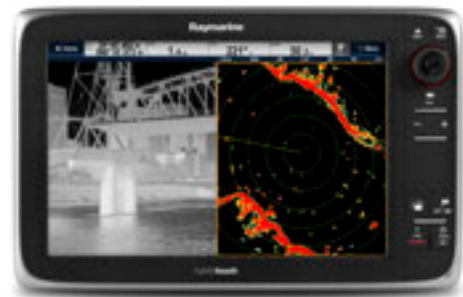
NASHUA, NH. March 30th, 2012– Raymarine is partnering with Beneteau Powerboats on the Greatest Loop and outfitting their Swift Trawler 34 with all new e-Series multifunction displays, HD Color Radar and FLIR thermal night vision technology. This state of the art system will guide the crew of the appropriately named, “The Greatest Loop” on its 5 month circumnavigation of eastern North America.



At the heart of the Swift Trawler 34’s navigation system are Raymarine’s new e-Series HybridTouch™ multifunction navigation displays. The e-Series displays are networked together at the main nav-station and the flybridge, giving the crew full access to charts, radar, and thermal night vision from either location. The new e-Series feature built in Wi-Fi for integration with smart phones and tablets using Raymarine’s Rayview mobile app for iOS and Android devices. With the RayView app, the crew’s mobile devices are transformed into powerful navigation repeaters,

enabling anyone onboard to view navigation charts, radar and even thermal night vision right from their mobile device in real time.

The Swift Trawler 34 crew will be navigating with the confidence of Raymarine HD Color radar and Raymarine AIS technology providing accurate situational awareness in congested water ways. Early morning, dusk or night time navigation will be much easier for the Swift Trawler 34. The vessel is equipped with Raymarine’s T450 thermal camera with industry leading FLIR thermal imaging technology. The T450 camera integrates with the e-Series displays, allowing to crew to see at night with thermal imaging alongside radar and chartplotter navigation apps.





Keeping the Swift Trawler 34 on course is Raymarine's SPX30 autopilot and the new p70R autopilot control head. The SPX30 autopilot will assist with steering during the open water portion of the journey, delivering razor sharp course control thanks to the integral rate-gyro and Raymarine's exclusive Advanced Steering Technology.

The voyage begins in mid-May 2012 and will conclude in Annapolis, Maryland in October 2012. Follow the journey online at www.TheGreatestLoop.com.

For additional product information please visit www.raymarine.com.

About Raymarine

Raymarine, a world leader in marine electronics, develops and manufactures the most comprehensive range of electronic equipment for the recreational boating and light commercial marine markets. Designed for high performance and ease of use, the award-winning products are available through a global network of dealers and distributors. The Raymarine product lines include radar, autopilots, thermal night vision, GPS, instruments, fishfinders, communications, and integrated systems. Raymarine is a division of FLIR Systems, a world leader in thermal imaging. For more information about Raymarine in the USA call 1-603-881-5200 or visit www.raymarine.com.

About FLIR Systems:

Pioneers in all aspects of infrared technology, FLIR designs, manufactures, and supports thermal imaging systems and subsystems for industrial, scientific, government, commercial, and firefighting applications. With a nearly 50-year history of infrared innovation, hundreds of thousands of systems in use worldwide, and development centers and sales offices in over 60 countries, FLIR is the world leader in thermal imaging technology. Visit the company's website at www.FLIR.com

####

Marine generator set Quiet Diesel™ Series 6/7.5 QD Model MDKBJ



Cummins Onan

Performance you rely on.™



Features and benefits

- Rugged dependability, high quality and innovation make Cummins Onan Marine Generators the leader in marine generator design and development, providing Performance you rely on.™
- The digital QD (Quiet Diesel) Series models are the first marine generator sets with self-monitoring capability and network communication.
- The optional Cummins Onan Digital Display provides user-friendly self-diagnostic features and text display including extensive engine and alternator information.
- Cummins Onan Marine Generators, with advanced design and development processes, use technology to lower sound and vibration. Our sound shields minimize noise and deliver better sound quality. The optimized mounting system greatly reduces vibration.
- Certified to U.S. Environmental Protection Agency (EPA) emission standards.
- Cummins Onan Marine Generators have the largest worldwide certified distributor/dealer support network in the industry with more than 70 years of marine experience.

Models and ratings

Model	kW/kVA	Voltage	Amps	Phase	Hz	Engine RPM
6.0MDKBJ	6.0/6.0	110/220	54.5/27.3	1	50 Hz	2400
		115/230	52.2/26.1	1	50 Hz	2400
		120/240	50.0/25.0	1	50 Hz	2400
7.5MDKBJ	7.5/7.5	120	62.5	1	60 Hz	2900
		120/240	62.5/31.3	1	60 Hz	2900

Single phase output at 1.0 power factor. Other single phase configurations are available, contact your distributor/dealer for more information. Rating conditions are 100 kPa (29.6 in Hg) barometric pressure, 30% relative humidity and 25° C (77° F) (ref. ISO 3046).

Sound level, weight, and size

Sound level		Dimensions			
50 Hz configuration	60 Hz configuration	Weight (dry)	Length	Width	Height
69 dB(A)*	71 dB(A)*	195 kg (429 lb)	664 mm (26.1 in)	583 mm (22.9 in)	535 mm (21.1 in)

* Full load at 1 m

Stowaway Turbo Series Air Conditioning

Powerful, Quiet, and Compact With No Drain Pan Worries

Now
with R-410A

Photo © Gilles Martin-Raget



STQ16K Stowaway Turbo shown with optional sound cover



The Stowaway Turbo series completely revolutionized self-contained cooling and heating with the newest innovations in marine air conditioning system design.

The rust-free molded composite drain pan has three drains for the rapid removal of condensate water.

An advanced cushioning system results in significantly quieter, virtually vibration-free operation. The enclosed blower motor eliminates overhang to provide easier installation.

The Turbo series was specifically engineered to harness and maximize the impressive performance of R-410A refrigerant. Used in the HVAC industry for more than 10 years, R-410A refrigerant is proven, reliable, and complies with all EPA standards and is accepted world wide.

Easy-to-install sound cover provides up to 50% noise reduction

Make a quiet system even quieter. These compact, easy-to-install sound covers are available for all Stowaway Turbo models.



The cover fits over the compressor, providing a 3- to 5-dB noise reduction—which is about a 50% drop in what the human ear can perceive. Installation takes just minutes and all mounting hardware is included.

Key Benefits

- Up to 27% more energy efficient
- Up to 21% increased capacity
- Compact design uses less space
- Rust-free drain pan
- Up to 85% less standing water in drain pan
- Cushioned mounts reduce noise and vibration
- Engineered to maximize performance of R-410A, an environmentally safe refrigerant
- Optional sound cover further reduces compressor noise up to 50%

Product Testimonial

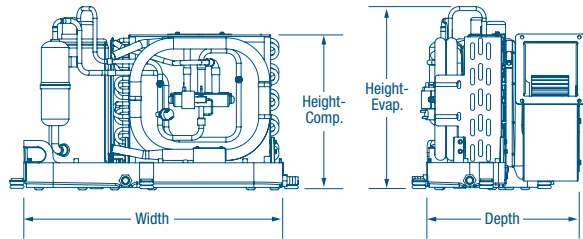
"There is very little noise coming from the compressor, and vibrations are practically non-existent. I highly recommend this unit."

— Bob Silverman, Owner, 305 Bayliner Express Cruiser

Technical Specifications for Vector Turbo Series

MODEL ⁽¹⁾	STQ6K			STQ8K			STQ10K			STQ12K			STQ16K		
Capacity (BTU/Hr) ⁽²⁾	6,000			8,000			10,000			12,000			16,000		
Voltage (VAC)	115	230	240	115	230	240	115	230	240	115	230	240	115	230	240
Cycle (Hz)/Phase (Ph) ⁽³⁾	60/1	60/1	50/1	60/1	60/1	50/1	60/1	60/1	50/1	60/1	60/1	50/1	60/1	60/1	50/1
Full Load Amps (FLA) cool	4.60	2.20	2.70	5.50	3.10	3.20	6.70	3.30	2.90	8.70	4.00	3.30	10.40	5.10	4.60
Full Load Amps (FLA) heat	5.90	2.80	3.70	7.10	4.00	4.10	8.80	3.90	3.80	10.90	5.10	4.30	13.60	6.60	6.00
Blower (FLA)	0.80	0.36	0.36	1.31	0.70	0.83	1.14	0.61	0.48	1.14	0.61	0.48	1.61	0.78	0.56
Locked Rotor Amps (Comp)	36.00	17.70	17.70	36.00	17.70	17.70	42.00	22.00	18.80	58.00	28.00	21.00	62.00	34.00	22.00
K.V.A. (Kilo-Volt-Amps)	0.68	0.64	0.88	0.82	0.92	0.99	1.02	0.90	0.91	1.26	1.18	1.03	1.57	1.51	1.43
Max. Circuit Breaker (Amps)	20	11	10	21	11	11	27	16	14	34	18	14	42	20	20
Min. Circuit Ampacity (Amps)	11	6	6	12	6	6	16	9	8	19	10	8	24	12	11
Refrigerant R-410A (oz/g)	8.5/241	8.5/241	8.5/241	9.0/255	9.5/269	9.5/269	11.0/312	11.0/312	11.0/312	10.5/298	11.0/312	11.5/326	13.0/369	13.0/369	13.0/369
Height - Evap. (in/mm) ⁽⁴⁾	10.8/274			10.8/274			12.2/310			12.2/310			12.9/328		
Height - Comp.(in/mm)	11.1/282			11.1/282			13.0/329	12.5/318	12.5/318	12.5/318			13.4/340		
Height - w/opt. Sound Cover	13.4/340			13.4/3140			14.0/356			14.0/356			14.0/356		
Width (in/mm)	17.6/447			17.6/447			20.4/518			20.4/518			21.4/544		
Depth (in/mm)	10.7/272			10.7/272			12.4/315			12.4/315			13.3/338		
Min. Duct Size (in/mm)	4/102			5/127			6/152			6/152			7/178		
Min. SA Grille (sq. in/sq. cm)	32/206			48/310			60/387			70/452			80/516		
Min. RA Grille (sq. in/sq. cm)	64/413			80/516			100/645			130/839			160/1032		
Net Weight (lbs/kg)	43.4/19.7			46.7/21.2			49.6/22.5			53.0/24.0			59.6/27.0		
Gross Weight (lbs/kg)	53.4/24.2			56.7/25.7			59.6/27.0			63.0/28.6			69.6/31.6		

- ¹ Add a 'C' for 230V units. Examples STQ8 = 115V, STQ8C=230V.
- ² BTU and electrical data are based on a 45°F / 7.2°C evaporator and 100°F / 37.8°C condenser in cool mode, and a 45°F / 7.2°C evaporator and 130°F / 54.4°C condenser in heat.
- ³ 60Hz units must not operate at 50Hz and 50Hz units must not operate at 60Hz unless data plate states otherwise.
- ⁴ Electric box is remote mounted up to 34 in. (864 mm) away from compressor. Electrical box dimensions are 2.7 in. (69 mm) x 6.5 in. (165 mm) x 8.8 in. (224 mm).



DOMETIC MARINE DIVISION

2000 N. Andrews Ave. Ext. I Pompano Beach, FL 33069 USA | 954-973-2477 | Fax 954-979-4414
www.DometicUSA.com | MarineSales@DometicUSA.com

24/7 Tech Support for United States & Canada:

8:00 AM to 5:00 PM Eastern Time: 800-542-2477
 After hours and weekends: 888-440-4494

International Sales & Service:

Europe & the Middle East: Call +44(0)870-330-6101
 For all other areas visit our website to find your nearest distributor.



Dealer:

Cruise with Confidence with ValvTect Marine Fuels

Wherever you are cruising this summer you'll find Certified ValvTect Marinas along the way to help make your cruise free of fuel related problems.

Even though your boat's engines may be well maintained and in good shape, fuel related problems such as plugged fuel filters, fuel pump or injector failure can shut your engine(s) down and ruin your cruise. To help prevent these problems, Certified ValvTect Marinas supply ValvTect Marine Diesel that contains BioGuard micro-biocide (to assure bacteria-free fuel) and ValvTect Marine Gasoline with Ethanol Gasoline Treatment. These ValvTect marine grade fuels are specially formulated for marine use to prevent fuel related problems.

Unlike the high sulfur diesel (no longer available), lower sulfur diesel fuel destabilizes quickly, has poor lubricity, contains more moisture and is more susceptible to develop sludge, bacteria and algae growth

that plugs your fuel filters. It contains VT 101 lubricity improver that increases the fuel's lubricity that can prevent premature wear of fuel pumps and fuel injectors. Additionally, ValvTect Marine Diesel contains cetane improver and Diesel Guard detergent to prevent and clean-up existing fuel injector deposits; and clean fuel injectors can reduce fuel consumption up to 6% or more.

ValvTect Marine Gasoline contains ValvTect Ethanol Gasoline Treatment that helps prevent ethanol related problems, such as fuel destabilization, corrosion and phase separation. It also contains a special ValvTect detergent to prevent and fuel injector and intake valve carbon deposits (called gunk) that can improve performance and can reduce fuel consumption and can reduce fuel consumption as much as 6%.

Unlike marinas that sell automotive brand or lower quality no-brand fuel, Certified ValvTect Marinas must have their



diesel and gasoline storage tanks tested and certified to be free of contamination from bacteria, algae and water up to twice a year. "We want to make sure every boater who fuels up at a Certified ValvTect Marina is confident they are getting a fuel that is specially formulated for their marine engines and is free of contamination", said Jerry Nensenson president of ValvTect Petroleum.

Marinalife and ValvTect Petroleum have partnered to help Marinalife members find Certified ValvTect Marinas through the Marinalife web site and partner directory. You can also find the location of all Certified ValvTect Marinas at www.valvtect.com or by calling ValvTect at 800-728-8258. **m/**

Think There's No Difference Between Diesel Fuels?

THINK AGAIN! Today's low and ultra-low sulfur diesel fuels offer poor lubricity, contain more moisture, destabilize rapidly and are more susceptible to bacteria growth. Because sulfur in diesel helped to lubricate the fuel system, lower sulfur diesel can cause premature injector and fuel pump wear and failure.

ValvTect Marine Diesel contains BioGuard™ biocide, VT 101 Lubricity improver, water dispersant, corrosion inhibitor, cetane improver and stabilizer. It also contains Diesel Guard detergent that cleans-up injector deposits (gunk) and has been found to help improve fuel economy as much as 6% or more.

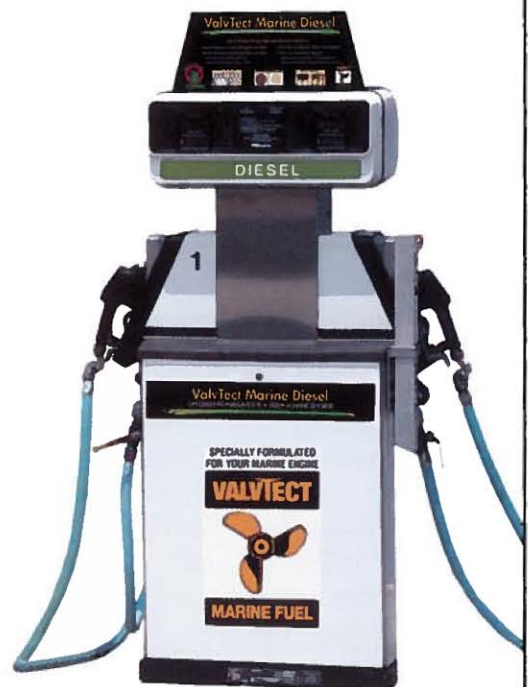
**VALVTECT
MARINE DIESEL
with BIOGUARD™**



**COMMERCIAL
DIESEL FUEL**



VALVTECT MARINE DIESEL
Specially Formulated for Marine Diesel Engines™



ONLY AVAILABLE AT CERTIFIED VALVTECT MARINAS. FOR THE LOCATION OF THE NEAREST CERTIFIED VALVTECT MARINA VISIT WWW.VALVTECT.COM OR CALL (800) 728-8258.

Pacifica® Plus – All boats, all waters, no compromises!



THE PRODUCT OF CHOICE ON THE SWIFT TRAWLER 34!

Pacifica Plus utilizes the latest in antifouling technology with a product leading combination of Ecomea™ and Biolux® Technology. Interlux combines the power of these two biocides to provide unique, maximum protection for the boat owner.

Interlux has one of the longest track records for copper-free technologies in the industry. Pacifica Plus was the first product registered by the EPA with Ecomea™. This track record means we have predictable experience and reputation for the even the harshest fouling conditions.

Whether you are in warm or cool waters, fresh, salt or brackish, Pacifica Plus is a proven winner against fouling. The product can be safely used on all substrates of any boat.

Features and Benefits

- Copper- free ablative technology with Biolux® slime blocking technology
- Contains Ecomea™
- Fast dry, low VOC for reduced solvent emissions
- Compatible with all substrates, including wood, fiberglass, aluminum and steel
- Maximum protection with proven track record
- Ablative Technology to minimize paint build-up over time
- Excellent replacement for other mid level ablative paints and copper-free products



Left: Ecomea™ only
Right: Pacifica® Plus with Ecomea™ and Biolux®

“We started using Pacifica Plus 3 years ago and haven't looked back since. It has completely replaced all other products for Aluminum boats in the yard.”

Dave Tuttle/Steve Hastings, Short's Marine, Millsboro, DE



“Pacifica Plus is fantastic! It is easy to use and simple to switch customer over from copper based paints. It is the cleanest antifouling paint out there. We love it!”

Ken Broman, Oak Harbor Marina Pasadena, MD

International Paint LLC 2270 Morris Avenue, Union, NJ 07083
Tel: (908) 964-2391 Toll free: 1-800-468-7589 Fax: (908) 686-8545 E-mail: InterluxTechnicalService@akzonobel.com

Interlux®, the AkzoNobel logo and all product names mentioned are trademarks of, or licensed to, AkzoNobel. © Akzo Nobel N.V. 2012. Ecomea™ is a trademark of Johnson & Johnson.



AkzoNobel



A Breakthrough in Satellite Messaging

DeLorme® inReach™

Reach Anyone. Anywhere. Any Time.

inReach is the first consumer-affordable satellite communicator with two-way text messaging, interactive SOS, message delivery confirmation, and global coverage.

- Send and receive vital information and updates
- Be assured your personal or SOS messages have been delivered
- Explore with confidence, knowing you can communicate from anywhere

By itself, inReach is a multi-purpose GPS communicator

- Pre-load up to three check-in messages for pushbutton delivery
- Designate delivery to email addresses, cell phones, Facebook, or Twitter
- Send SOS alerts with your GPS location; button lock prevents false alarms
- Receive delivery confirmation for all messages and SOS alerts via LED
- Let others track your progress online for mutual peace of mind

Pair inReach with an Android smartphone or a DeLorme PN-60w GPS for two-way text messaging



- Compose messages up to 160 characters on your phone or GPS keyboard
- Exchange messages with email and cell phone contacts, and other inReach users
- Interactive SOS—describe your emergency in detail and exchange status updates with Response Center

Award-Winning Innovation



2011 Best of What's New



Men's Journal



CES 2012 Innovations Award



National Geographic Adventure



Outside Magazine



Gear Junkie

The Complete Cruising Kit



When you have *Waterway Guide* and *Skipper Bob* books on board, you get much more than pretty pictures and directions to anchorages. You get the knowledge and experience of on-the-water cruising editors and in-house staff who provide detailed mile-by-mile coverage to the best destinations. You also get access to our real-time updates on our user-friendly web site, which provides the most current navigational news and alerts. And when you join our cruising club, you get the added benefit of member-only discounts and privileges. So fill your treasure chest with cruising essentials from *Waterway Guide*.

DOZIER'S
WATERWAY
GUIDE THE CRUISING AUTHORITY

www.WaterwayGuide.com • 1-800-233-3359

Trawler Fest®

BOAT SHOW – EDUCATIONAL EXPERIENCE – RENDEZVOUS

Trawler Fest is a proud sponsor of Beneteau's *The Greatest Loop*.

Trawler Fest is *PassageMaker Magazine's* premier multi-day event celebrating the cruising-under-power lifestyle. Held throughout the United States, Trawler Fest combines a custom boat show, educational opportunities, and a cruisers' rendezvous all into one event.

Trawler Fest University, held the two days prior to Fest, offers intensive two-day courses taught by marine industry experts in a small-group setting.

UPCOMING TRAWLER FEST EVENTS

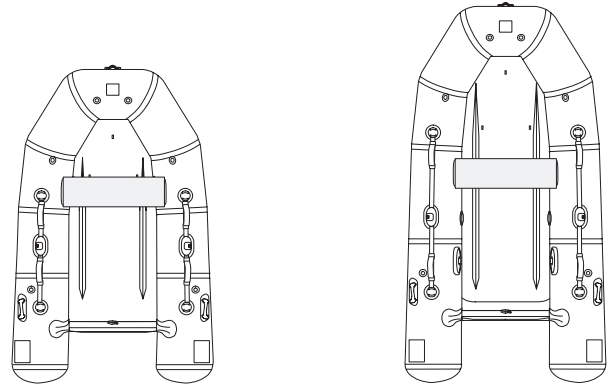
Baltimore, MD Sept. 25–30, 2012

Fort Lauderdale, FL Jan. 29–Feb. 2, 2013

Anacortes, WA May 2013

For more information please call 888.487.2953
or visit www.trawlerfest.com

105 Eastern Avenue, Suite 203, Annapolis, MD 21403
410.990.9086 www.trawlerfest.com



► RIB TENDERS

	250	300
DIMENSIONS (METERS - FEET/INCHES)		
Overall length	2,5 - 8'2"	3 - 9'10"
Inside length	1,62 - 5'4"	2,02 - 6'8"
Overall width	1,62 - 5'4"	1,62 - 5'4"
Inside width	0,7 - 2'4"	0,7 - 2'4"
Buoyancy tube diameter	0,45 - 1'6"	0,45 - 1'6"
CAPACITY		
Passengers (ISO)	3	4
Maximum payload ¹ (kg - lbs)	380 - 837,8	450 - 992,1
Total weight ² (kg - lbs)	38 - 83,8	48 - 105,8
Airtight compartments	2	2
DESIGN CATEGORY		
European directive N° 94/25/CE	D	C
OUTBOARD DATA		
Shaft: ● Short ■ long ✖ Extralong ✱ Ultralong ▲ Jet	●	●
Minimum recommended power ³ (Hp)	4	6
Minimum recommended power ³ (kW)	3	5
Maximum recommended power ³ (Hp)	6	8
Maximum recommended power ³ (kW)	5	6
Maximum power allowed ³ (Hp)	8	10
Maximum power allowed ³ (kW)	6	8
Maximum weight of outboard ⁴ (kg - lbs)	40 - 88,2	45 - 99,2
Maximum speed ⁵ (km/h - mph)	28 - 17,4	34 - 21,1
HULL STORAGE DIMENSIONS (METERS - FEET/INCHES)		
Length	1,76 - 5'9"	2,16 - 7'1"
Width	0,9 - 2'11"	0,9 - 2'11"
Height	0,3 - 0'12"	0,3 - 0'12"
Hull angle	-	-

All dimension measurements indicated have a tolerance of +/- 3%. Weight and speed measurements have a tolerance of +/- 5%.

[1] The maximum payload rating has been calculated according to ISO standards. Operating at or near maximum payloads is only advised in calm water and at reduced speeds.

[2] The weights indicated for the Cadet Roll-Up, Cadet Airlite, Cadet Solid and Cadet FR include floorboards, oars and foot pump.

[3] The spread of engine sizes corresponds to the efficient use of the boat with an average load. The minimum power is exploitable in relaxed activities, such as fishing, while the maximum recommended power is destined for performance activities such as water-skiing. For additional information all Zodiac boats from 10'2"/3.10 m to 13'9"/4.20 m can plane with 2 people on board (total load of 310 lbs/140 kg) using only a 6-8 Hp/5-6 kW outboard. Where the boat is fitted with an engine that exceeds Zodiac's maximum recommended power it must be treated with extreme care. This application is directed at experienced users using their boats for very specific purposes (carrying heavy loads, etc.). The capacity plate shows the maximum allowed power. In no case shall the boat be fitted with an engine that exceeds this power.

[4] Maximum authorized weight: Dry weight, according to engine manufacturers catalogue's specifications.

[5] Maximum speeds are given only as a general guide to understanding boat performance. They have been established by experienced professional pilots in ideal navigating conditions with one person aboard. Boat speed will be affected by the make of the motor, boat load, propeller and the water and weather conditions.



Freshest Data delivered every week! — Did you know that we publish more than 10,000 changes per week? That's more updates than the Admiralty makes in one year. When you buy Navionics, you are eligible for Freshest Data unlimited updates for one year. In just a few moments online, your chart is completely refreshed to Navionics' most current database!

Free PC app with new Navionics charts! — Navionics new robust planning tool allows you to view charts and manage your data on your PC or Mac. Browse, zoom, search, and plan, transfer routes and waypoints, and share UGC, on up to 5 computers!

For more information visit www.navionics.com.

Platinum+

Platinum+ Multi-Dimensional Charts — Navionics® Gold plus 3D with TurboView™, high resolution photo/chart overlay, port photos, geo-referenced coast pilots, and fishing detail.

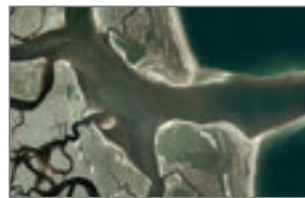
XL

DESCRIPTION	CF/NAV #	MSD/NAV#	MSRP
Lower 48 States & Hawaii			
Maine	CF/673P+	MSD/673P+	199.00
Boston-New York	CF/674P+	MSD/674P+	199.00
New Jersey-Delaware	CF/637P+	MSD/637P+	199.00
Chesapeake Bay	CF/634P+	MSD/634P+	199.00
North Carolina	CF/645P+	MSD/645P+	199.00
S Carolina-N Florida	CF/642P+	MSD/642P+	199.00
N Bahamas	CF/699P+	MSD/699P+	199.00
Central & S Florida	CF/632P+	MSD/632P+	199.00
East Gulf of Mexico	CF/630P+	MSD/630P+	199.00
Central Gulf of Mexico	CF/651P+	MSD/651P+	199.00
West Gulf of Mexico	CF/635P+	MSD/635P+	199.00
California South-Baja & Hawaii	CF/644P+	MSD/644P+	199.00
California & Oregon	CF/643P+	MSD/643P+	199.00
Puget Sound	CF/638P+	MSD/638P+	199.00
Lake Superior	CF/647P+	MSD/647P+	249.00
Lake Michigan	CF/646P+	MSD/646P+	199.00
Lake Huron	CF/652P+	MSD/652P+	249.00
Lake Erie & Saint Clair	CF/649P+	MSD/649P+	249.00
Lake Ontario	CF/648P+	MSD/648P+	249.00

XL3

DESCRIPTION	CF/NAV #	MSD/NAV#	MSRP
Lower 48 States & Hawaii			
West Great Lakes	CF/900P+	MSD/900P+	399.00
East Great Lakes	CF/901P+	MSD/901P+	399.00
US Northeast & Canyons	CF/904P+	MSD/904P+	399.00
US Mid Atlantic & Canyons	CF/905P+	MSD/905P+	399.00
US Southeast-Bahamas	CF/906P+	MSD/906P+	399.00
Caribbean & Bermuda*	CF/908P-2	MSD/908P-2	399.00
Gulf of Mexico	CF/907P+	MSD/907P+	399.00
US West Coast	CF/912P+	MSD/912P+	399.00
Canada & Alaska			
Nova Scotia-St Lawrence River*	CF/902P-2	MSD/902P-2	399.00
Nova Scotia-Newfoundland*	CF/903P-2	MSD/903P-2	399.00
Vancouver Island	CF/913P+	MSD/913P+	399.00
North BC-Baranof Island*	CF/914P-2	MSD/914P-2	399.00
South Alaska*	CF/915P-2	MSD/915P-2	399.00
NW Alaska-Aleutians*	CF/916P-2	MSD/916P-2	399.00

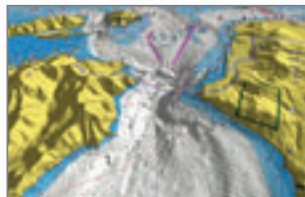
*Limited Platinum+ features.



Platinum+ Satellite Photo Overlay
Reveals more detail to improve situational awareness.



Gold 2D Marine Charts The clearest electronic charts for navigation.



Platinum+ 3D with TurboView™
View depths and elevation with 360° rotation and adjustable pitch.



Platinum+ Fishing Detail ideal for locating fish-holding structure with high resolution detail.

Gold

Gold All-In-One 2D Charts — The navigation standard. Huge coverage areas, nav aids, tides, currents, water depth, wrecks, rocks, marinas, and port services.

DESCRIPTION	CF/NAV #	MSD/NAV#	MSRP
All USA & N Bahamas	CF/1XG	MSD/1XG	199.00
Canada & SE Alaska	CF/2XG	MSD/2XG	249.00
Central & South America	CF/3XG	MSD/3XG	199.00

Marine & Lakes USA

Navionics Marine & Lakes USA gives you coverage where you need it most! Using the prepaid chip, visit Navionics.com to select your state. All lakes available from Navionics' extensive 17,000 lake database held within the state borders, including the Great Lakes as well as coastal marine coverage for that state out to 3 nautical miles. If your needs grow beyond that state boundary, additional coverage is available online for download anytime.

DESCRIPTION	MSD/NAV#	MSRP
Marine & Lakes USA	MSD/DWL-S	99.00

*California, Texas, and Florida split into 2 selectable regions.

**Enjoy Navionics...
Anytime, Anywhere.**